



6 Broomgrove Gardens, 17 Broomgrove Road, Broomhill, Sheffield, S10

Saxton Mee

6 Broomgrove Gardens, Broomhill

Offers Around

£330,000

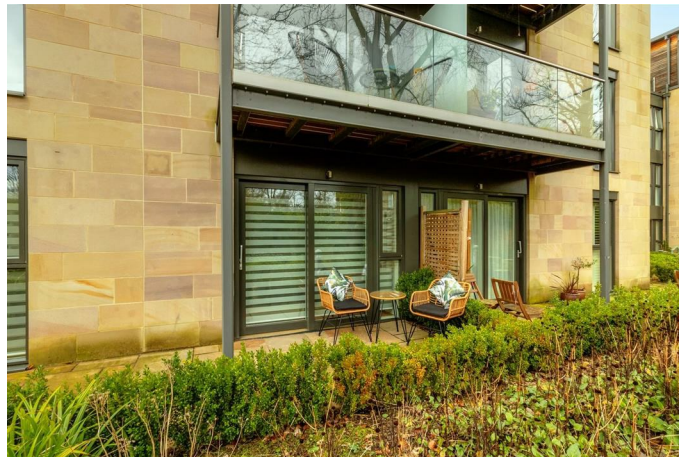
A beautifully presented two bedroom GROUND FLOOR apartment set in this exclusive development within walking distance of nearby Ecclesall Road and Broomhill with all of its shops and restaurants, Hospitals, Universities and the Botanical Gardens nearby.

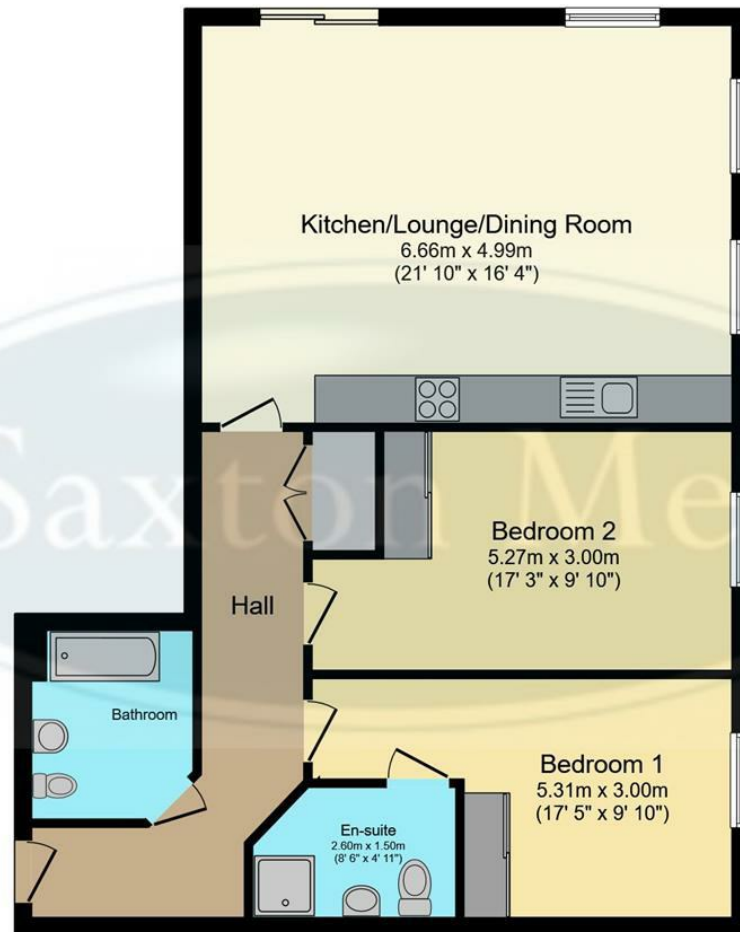
This spacious and stylish property briefly comprises: Secure communal entrance hallway, inner hallway, open plan living dining kitchen with a range of contemporary units with integrated appliances, plenty of space for a dining suite and a lounge area with patio doors opening to provide access onto the private terrace. The master bedroom has an en-suite shower room and fitted wardrobes, bedroom two is also a great size double room with fitted wardrobes. The family bathroom has bath with shower and screen above, wash hand basin and w.c,

The property has beautifully maintained communal gardens and offers wonderful accommodation in a very convenient location. Book your viewing today!



- Ground Floor Apartment Set In Fabulous Location
- Spacious Living/Kitchen/Dining Area
- Two Double Bedrooms
- Master Bedroom With En Suite Shower Room
- Family Bathroom With Shower Over Bath
- Beautifully Maintained Communal Gardens
- Leasehold 999 Years From 1st January 2017
- Service Charge £1560 Per Annum And Ground Rent £250 Per Annum
- Council Tax Band D/EPC Rating C
- Viewings Via Banner Cross Office





Floor Plan

Total floor area 82.2 sq.m. (885 sq.ft.) approx

This plan is for illustration purposes only and may not be representative of the property. Plan not to scale. Powered by PropertyBox

While we endeavour to make our sales particulars fair, accurate and reliable, they are only a general guide to the property and, accordingly, if there is any point, which is of particular importance to you, please contact the relevant office. The Agents have not tested any apparatus, equipment, fittings or services and so cannot verify they are in working order. The buyer is advised to obtain verification. Please note all the measurement details are approximate and should not be relied upon as exact. All plans, floor plans and maps are for guidance purposes only and are not to scale. Under no circumstances should they be relied upon as exact or for use in planning carpets and other such fixtures, fittings or furnishings. YOUR HOME IS AT RISK IF YOU DO NOT KEEP UP REPAYMENTS ON A MORTGAGE OR OTHER LOAN SECURED ON IT. 'A Life Assurance policy may be requested.' 'Written Quotations of credit terms available on request.'

Banner Cross
T: 0114 268 3241
E: bannercross@saxtonmee.co.uk
www.saxtonmee.co.uk

Hathersage
T: 01433 650009
E: hathersage@saxtonmee.co.uk

Bakewell
T: 01629 815307
E: bakewell@saxtonmee.co.uk

Matlock
T: 01629 828250
E: matlock@saxtonmee.co.uk

Saxton Mee